

St Mary's News: Sunday 1 March 2020

Please switch hearing aids to "T". Large print hymn books and service sheets available

Wi-Fi : (network: TalkTalk FF6D17) Password CA4TXUET

Website : www.stmaryshadlow.org.uk



: St. Marys Hadlow

Today

1st Sunday of Lent

8am Holy Communion (BCP)

10am Parish Eucharist

Readings:

Romans 5. 12-19

Matthew 4. 1-11



The Collect for the 1st Sunday of Lent

Almighty God, whose Son Jesus Christ fasted forty days in the wilderness, and was tempted as we are, yet without sin: give us grace to discipline ourselves in obedience to your Spirit; and, as you know our weakness, so may we know your power to save; through Jesus Christ your Son our Lord, who is alive and reigns with you, in the unity of the Holy Spirit, one God, now and for ever.

Amen

Next week

2nd Sunday of Lent

8am Holy Communion (BCP)

10am Parish Eucharist

Readings:

Psalm 121

John 3. 1-17



Prayers for the Week

We pray for all who live in Monypenny Close and Warren Gardens.

And from our Book of Remembrance we pray for:

Dorothy May Chapman (3rd)

Grace Livingston Booth (4th)

Nadine Jane (4th)

Helen Garner (5th)

Mark Dickinson (7th)

Mick Sayers

If you would like a loved one remembered on the anniversary of their death, please complete a blue form and the name will be added to the Book of Remembrance.

Welcome to St Mary's!

Visitors are warmly welcomed; please join us for refreshments in the Upper Room after today's 10am service.



This week at a glance

Monday

9am Morning Prayer

Tuesday

9am Morning Prayer

5.30pm Yoga

Wednesday

9.30am Holy Communion

10.30 Coffee Pots & Tiny Tots

1pm Café Plus

7.30pm Bell Ringing Practice

Thursday

9am Morning Prayer at Hadlow College

12.30pm Lent Course

Friday

7.15pm Choir Practice

Saturday

8am Lent Course

10am Who Let the Dads Out?

St Mary's Upper Rooms are available to hire at very reasonable cost. Please contact the Vicarage Office at office@stmaryshadlow.org.uk

For Children and Young People

Activity Bags for younger children are in baskets at the back of church. Books, crayons etc are in the children's corner.



Sunday Groups

Held in the Upper Room during the 10am service in term-time:

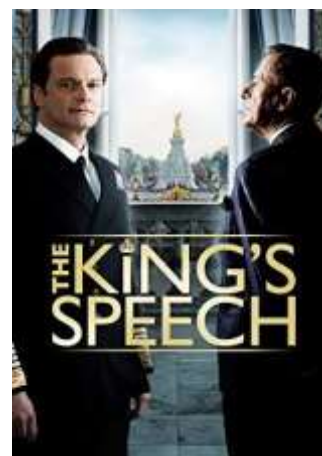
JAM (Jesus and Me) – up to 11 yrs

Christ in Action – 11 years +

All visitors' children are welcome

Lent Course

This year's Lent Course is based around the film "The King's Speech". The course runs for six weeks. You have a choice



of days: Thursdays at 1pm (with light lunch at 12.30), and Saturday mornings at 8am with a bacon roll. If you would like to attend, please sign up on the sheet at the back of church. The course book costs £5; to order a copy, please see Nicky.

St Mary's Lent Challenge

New Maternity Unit and School
Dormitories in Kibakwe.

There are now four girls' dormitories at the Secondary School in Kibakwe. The solar powered lighting system we have provided so far now needs further expansion with at least one more panel and expanded electrical support to provide lighting for the three new dormitories.

The hospital now has a new Maternity Unit but would greatly benefit from more water filters. Will you help give adequate lighting to the children's study areas and their sleeping quarters, plus help keep infant mortality to an absolute minimum with clean water available all the time. £25 from you raised by giving something up for Lent will mean a light can be seen in the darkness and new life can thrive.

World Day of Prayer 2020

Friday 6 March at Tonbridge Methodist Church, Higham Lane. This year we join with Christians throughout the world to pray at a service prepared by women in Zimbabwe who have chosen the theme: Rise! Take your Mat and Walk. The service runs from 10-11.15am and is followed by refreshments. All welcome. Lifts available – please speak to Janice.

'Focus on Faith' Ladies' Bible Day

Wednesday 18 March, 9.15am-
2.15pm at Ryarsh Village Hall

About 6 of us usually go to these days along with about 100 others. Jean Kerr will be speaking on the subject 'I Can See Clearly'.

Good teaching, good singing. good soup and sandwich lunch. Cost £10. Booking essential: contact Julia Miles.

APCM and the Electoral Roll

The Church Electoral Roll (ER) is having its annual revision until 23 March. If you are already on the ER you do not need to do anything. If you are not on the ER and St Mary's has been your regular place of worship for at least six months, you are invited to join the Roll. Youngsters who will be aged 16 or over by the 25 April are eligible too. Being on the ER does not commit you to anything, but demonstrates your membership of St Mary's and entitles you to vote at the Annual Parochial Church Meeting (APCM) and to stand for office if you wish. The simple form you would need to sign is on the table at the back. The APCM will be held on Sunday 26 April. Please talk to a church warden or Martin Massy to find out more.

Lent in a Bag

Bags are available at the back of church. Lent in a Bag contains a leaflet that will guide you through Lent using six objects as a focus to lead you through some bible verses and into prayer.

Lent Reflection

Wilderness

Forty days alone, a wilderness of thoughts, tempting and inviting thoughts, which could so easily have distracted you from your task, your mission, your vision.

Yet you emerged, stronger and more attuned to all that had to be done, despite a time constraint that to our eyes would have seemed hopeless.

We too live in stressful times. Demands are made of our time that leave so little for the important things of life. We are easily distracted in the wilderness of our lives, by every call to go this way or that, to turn stone to bread, leap from mountains, and do all that would keep us from the truth.

We listen to the voices of this world, and ignore the one who endured all this and so much more, and emerged triumphant, that we might not have to suffer so.

Forgive us, Father, when we get distracted from our task. Forgive us those times when we try to be all things to all men, and fail to be anything to anyone.

Who's who at St Mary's?

Vicar

The Reverend Paul White
01732 850238
Pauljohnwhite@gmail.com

Curate

The Reverend Nicky Harvey
01732 852564
rev.nickyharvey@gmail.com

Church Wardens

Barbara Smith (01732 852174)
Michael Payne (01732 852187)

Treasurer

Martin Massy (01732 851519)

Music Director

Antony le Fleming (01622 817842)
antle Fleming@gmail.com (new singers –
of all ages – always most welcome!)

Parish Administrator

Janice Massy (01732 850238/851519)
office@stmaryshadlow.org.uk

Office Hours

Tuesday 9.30am – 3pm
Thursday 8.30am – 2pm

PCC Members, any of whom can be approached for help or information

Rev Paul White; Rev Nicky Harvey; Barbara Smith & Michael Payne; Martin Massy; Francis Griffiths, Val Newell & Kelly Parsons (Deanery Synod reps.); Kirsty Finch; Jack Good; Jenny Hopkins; Julia Miles; Katerina Nixon; Rachel Packham; Lisa Porritt; Mark Totty & other members.

PCC Secretary: Martin Massy

mhmassy@btinternet.com

Minutes of PCC meetings are on the notice board and on St Mary's website.